

Pushing the Boundaries of Your Urology Practice



bkSpecto

- High-resolution, real-time images with superb anatomical details
- Intuitive, touch-based workflow built for urology
- Access to BK's high performance urology transducers
- Custom-fit clinical design

bk
medical

as specialized as you

Customized Workflow

An intuitive, touch-based workflow built for urology.



The all-glass interface with Tru-Sense™ technology enables 'sightless navigation'.



The urology-centric layout is configurable for your clinic.



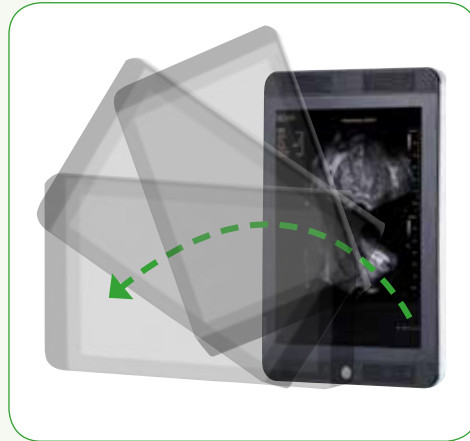
The easy-to-use interface enables faster exams and reduces staff learning curve.



The sealed glass interface makes cleaning and infection control fast and efficient.

Custom-fit Clinical Design

Portrait view for superb vertical dual imaging



Landscape view for side-by-side imaging

Adjust monitor orientation to suit your needs

Fold-down monitor for easy transportation

Adjustable interface angle, monitor angle, and system height to suit your preferences

Integrated battery option for over an hour of plug-free imaging

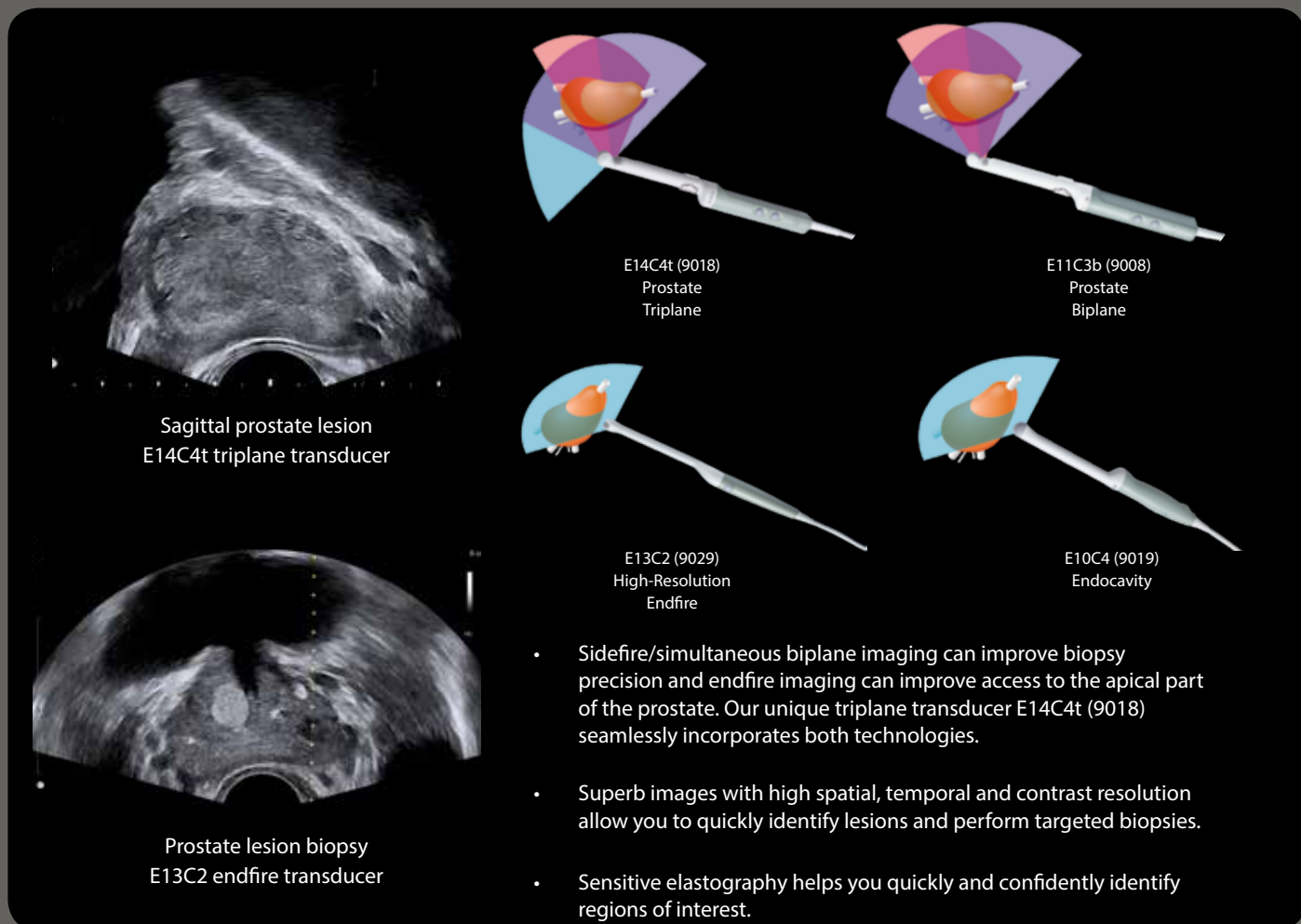
Small footprint for an easy addition to your workspace



Superior Image Quality

High-resolution images with superb anatomical details are enabled by faster processing, advanced auto-optimization algorithms, and BK's high performance transducers.

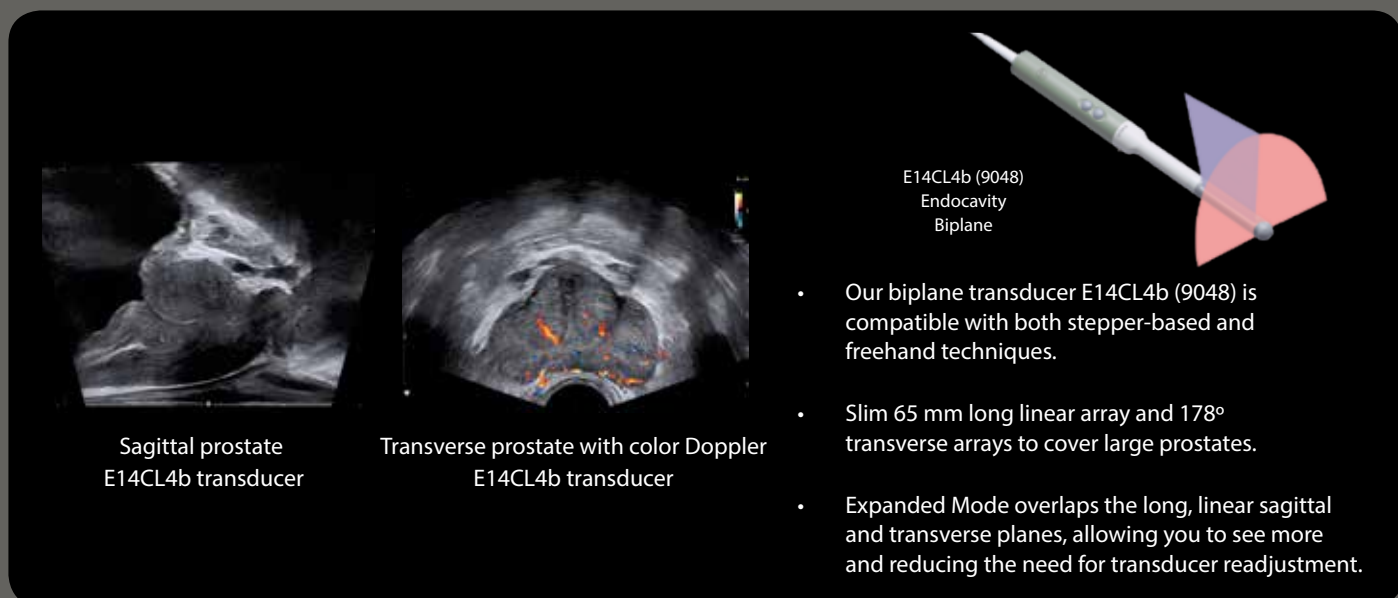
Transrectal Prostate Biopsy



The image displays four ultrasound images and four diagrams of transducers used for transrectal prostate biopsy. The top-left image shows a sagittal prostate lesion, labeled 'Sagittal prostate lesion E14C4t triplane transducer'. The bottom-left image shows a prostate lesion biopsy, labeled 'Prostate lesion biopsy E13C2 endfire transducer'. The top-right diagram is labeled 'E14C4t (9018) Prostate Triplane', showing a transducer with three intersecting planes (red, blue, and green). The top-right diagram is labeled 'E11C3b (9008) Prostate Biplane', showing a transducer with two intersecting planes (red and blue). The bottom-right diagram is labeled 'E13C2 (9029) High-Resolution Endfire', showing a transducer with a single endfire plane (red). The bottom-right diagram is labeled 'E10C4 (9019) Endocavity', showing a transducer with a single endocavity plane (red).

- Sidefire/simultaneous biplane imaging can improve biopsy precision and endfire imaging can improve access to the apical part of the prostate. Our unique triplane transducer E14C4t (9018) seamlessly incorporates both technologies.
- Superb images with high spatial, temporal and contrast resolution allow you to quickly identify lesions and perform targeted biopsies.
- Sensitive elastography helps you quickly and confidently identify regions of interest.

Transperineal Prostate Biopsy



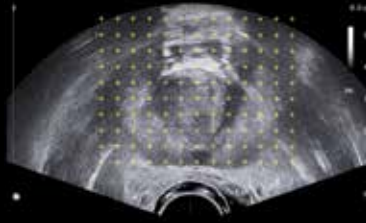
The image displays two ultrasound images and one diagram of a transperineal prostate biopsy transducer. The left image shows a sagittal prostate, labeled 'Sagittal prostate E14CL4b transducer'. The right image shows a transverse prostate with color Doppler, labeled 'Transverse prostate with color Doppler E14CL4b transducer'. The diagram on the right is labeled 'E14CL4b (9048) Endocavity Biplane', showing a transducer with two intersecting planes (red and blue).

- Our biplane transducer E14CL4b (9048) is compatible with both stepper-based and freehand techniques.
- Slim 65 mm long linear array and 178° transverse arrays to cover large prostates.
- Expanded Mode overlaps the long, linear sagittal and transverse planes, allowing you to see more and reducing the need for transducer readjustment.

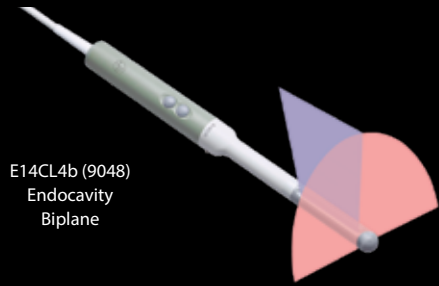
Guiding Prostate Therapy



Sagittal prostate with catheter
E14CL4b transducer



Transverse prostate
E14CL4b transducer



E14CL4b (9048)
Endocavity
Biplane

- The endocavity biplane transducer E14CL4b (9048) delivers confidence in precise prostate procedures, including brachytherapy and cryotherapy.
- Biplane imaging provides better orientation during needle placement, and greater confidence in source placement in the prostate gland.

Kidney/Bladder



Color Doppler of kidney and hilum
5C1e transducer



Urinary bladder -
enlarged prostate
5C1e transducer



6C2 (9040)
Curved



5C1e (9085)
Curved



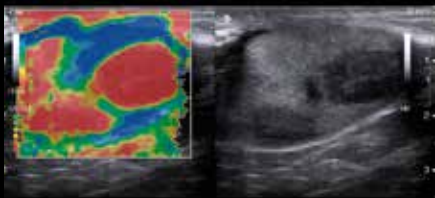
6C2s (9023)
Small Curved



9C2 (9002)
Curved

- Our curved array transducers provide superb image quality for advanced abdominal kidney imaging, measurement, and biopsy. The anatomical detail assists in locating kidney stones, and sensitive color Doppler helps to determine blood flow measurements.
- The curved field of view provides outstanding images of the bladder.

Penile/Testis



Elastography of testicular lesions, indicating greater
stiffness of lesions vs. normal testicular tissue
18L5 transducer



Sagittal testis
13L4w wide transducer



18L5 (9070)
High-Frequency Linear



14L3 (9051)
Linear



13L4w (9011)
Wide Linear



14L3e (9086)
Linear

- Sensitive color Doppler helps to visualize blood flow in the testes and penile arteries, and spectral Doppler helps to examine and quantify blood flow.
- Superior visualization and a wide field of view enable you to check for vascularity, identify testicular torsion, and evaluate injuries in the testes.

Pushing the Boundaries of Your Urology Practice

bkSpecto



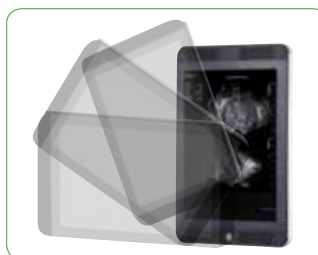
Superior image
quality



An intuitive,
touch-based
interface built for
urology



Access to BK's
high performance
urology
transducers



Custom-fit
clinical design

bkSpecto has not been licensed by Health Canada

BK Medical

8 Centennial Drive
Peabody
MA 01960
USA
T +1 978-326-1300
bkultrasound.com

USA

Sales & Service
BK Medical
8 Centennial Drive
Peabody
MA 01960
USA
T +1 978-326-1300
F +1 978-326-1399
bkultrasound.com

Europe and Rest of World

Sales, Service & Design Center
BK Medical
Mileparken 34
2730 Herlev
Denmark
T +45 4452 8100
F +45 4452 8199
bkultrasound.com

bk 
medical