

# High-Resolution Transesophageal Imaging

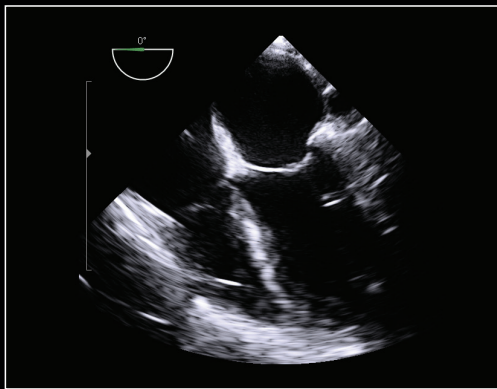
- The transesophageal echocardiography (TEE) transducer T7P2m\* is ideal for ultrasound examinations of all areas of the heart (including chambers, valves, and the aorta) without interference from the ribs or lungs.
- Useful in monitoring cardiac surgery procedures.
- 4-way flexible mechanism provides precise positioning for optimal cardiac imaging.
- Ergonomic control handle allows for one-handed operation.



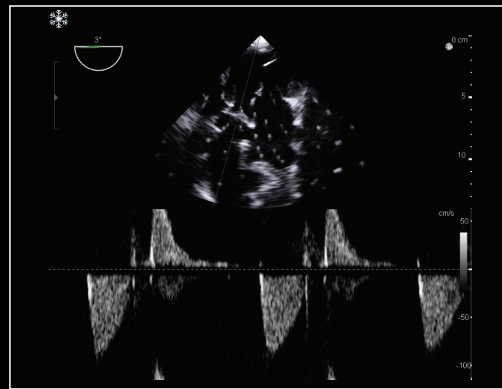
# Real Clinical Impact with High-Resolution Imaging

## T7P2m TEE TRANSDUCER

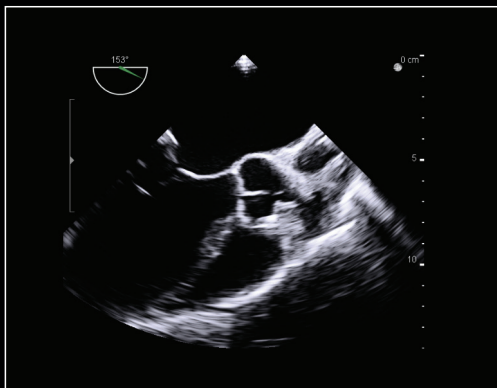
- Small tip for improved patient comfort
- Multiplane imaging capability
- 180° motorized array rotation
- Flexible, anti-buckling neck section
- 7-2 MHz frequency range
- 20 cm scan depth
- Phased array technology



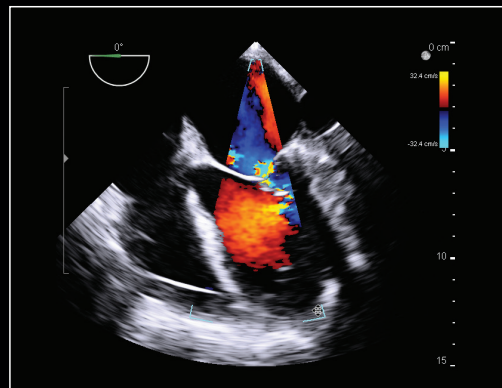
Mid-esophageal four-chamber view  
T7P2m transducer



CW Doppler seen from transgastric  
long axis view during electrosurgery  
T7P2m transducer



Mid-esophageal long axis view  
T7P2m transducer



Mid-esophageal 4C color flow view  
with mitral regurgitation  
T7P2m transducer

BK Medical  
8 Centennial Drive  
Peabody, MA 01960  
USA  
T +1 978 326 1300  
bkmedical.com

USA  
Sales & Service  
BK Medical  
8 Centennial Drive  
Peabody, MA 01960  
USA  
T +1 978 326 1300  
F +1 978 326 1399  
bkmedical.com

Europe and Rest of World  
Sales, Service & Design Center  
BK Medical  
Mileparken 34, 2730  
Herlev, Denmark  
T +45 4452 8100  
F +45 4452 8199  
bkmedical.com

**bk**   
medical